

Operation

Determine the left and right sides of the machine from the normal operating position.

Installing and Removing the Attachment

Refer to the *Operator's Manual* for the traction unit for the installation and removal procedure.

Important: Before installing the attachment, position the machine on a level surface, ensure that the mount plates are free of any dirt or debris, and ensure that the pins rotate freely. If the pins do not rotate freely, grease them.

Note: Always use the traction unit to lift and move the attachment. To move an auger without the drive head, sling a strap over each end of the auger and hoist it to the desired location.

⚠ WARNING

If you do not fully seat the quick-attach pins through the attachment mount plate, the attachment could fall off the machine, crushing you or bystanders.

Ensure that the quick-attach pins are fully seated in the attachment mount plate.

⚠ WARNING

Hydraulic fluid escaping under pressure can penetrate skin and cause injury. Fluid injected into the skin must be surgically removed within a few hours by a doctor familiar with this form of injury; otherwise, gangrene may result.

- Ensure that all hydraulic-fluid hoses and lines are in good condition and all hydraulic connections and fittings are tight before applying pressure to the hydraulic system.
- Keep your body and hands away from pinhole leaks or nozzles that eject high-pressure hydraulic fluid.
- Use cardboard or paper to find hydraulic leaks; never use your hands.

⚠ CAUTION

Hydraulic couplers, hydraulic lines/valves, and hydraulic fluid may be hot. If you contact hot components, you may be burned.

- Wear gloves when operating the hydraulic couplers.
- Allow the machine to cool before touching hydraulic components.
- Do not touch hydraulic fluid spills.

Installing an Auger

⚠ WARNING

The auger head swings freely in the cradle arms. Your hands or fingers could get pinched and severely injured or amputated if they are caught between the cradle arms and the swinging drive head.

Keep your hands and fingers away from the cradle arms.

1. Park the machine on a level surface and engage the parking brake (if applicable).
2. If you are installing an auger on the Model 22806 drive head continue as follows, otherwise continue to step 3.
 - A. Lower the loader arms, shut off the engine, and remove the key.
 - B. Position the drive head vertically, slide a bolt (1/2 x 2-1/2 inches) into the holes in the front cradle arms, and secure it lightly with a flange nut (1/2 inch) as shown in Figure 4.
 - C. Continue to step 3.

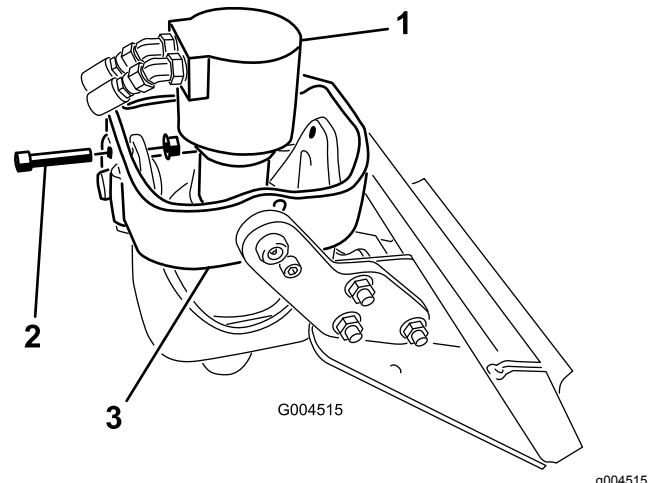


Figure 4

1. Drive head (front view)
2. Bolt
3. Front cradle arm

3. Raise the loader arms so that the drive head clears the ground.
4. Shut off the engine and remove the key.
5. Manually rotate the auger drive head up, until you can slide a bolt (1/2 x 2-1/2 inches) into the hole in the cradle arm, securing the drive head. Lightly secure the bolt with a nut (1/2 inch) as shown in [Figure 5](#).

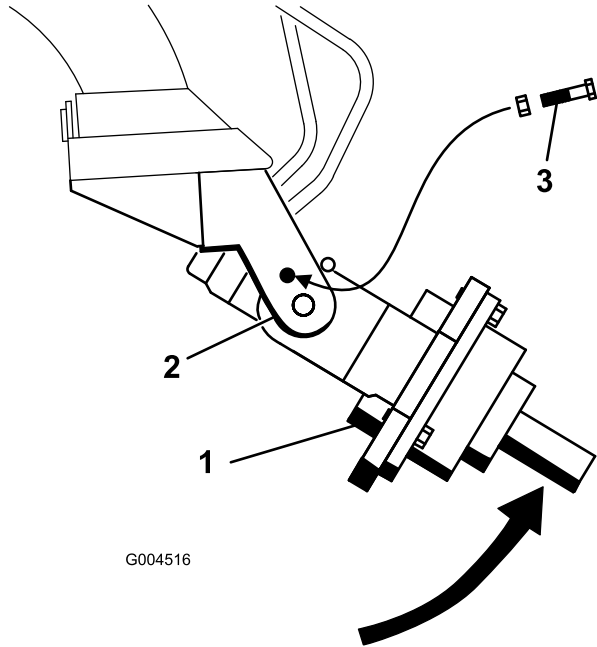


Figure 5

1. Drive head
2. Cradle arm
3. Bolt and flange nut

6. If using an extension with the auger, insert the end of the extension into the end of the auger and secure the auger to the extension with a bolt (7/8 x 4-1/2 inch) and nut (7/8 inch) as shown in [Figure 6](#).

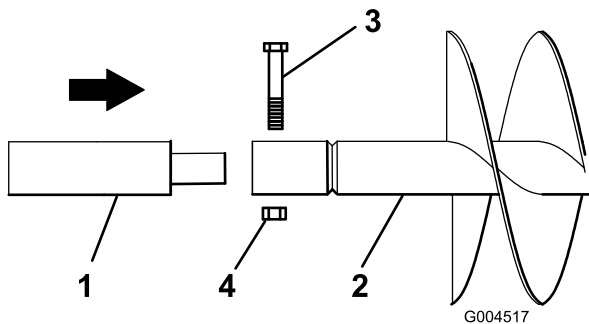


Figure 6

1. Extension
2. Auger
3. Bolt (7/8 x 4-1/2 inch)
4. Nut (7/8 inch)

7. Start the engine.

8. Maneuver the drive shaft into the end of the auger shaft or extension (if applicable) as shown in [Figure 7](#).

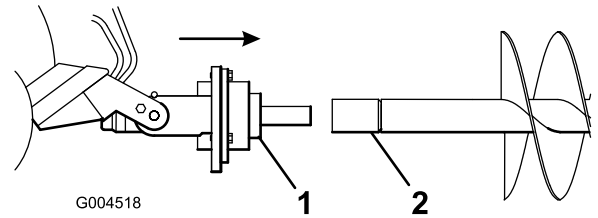


Figure 7

1. Drive head
2. Auger shaft

9. Shut off the engine and remove the key.
10. Secure the auger to the drive head with a bolt (7/8 x 4-1/2 inch) and nut (7/8 inch) as shown in [Figure 8](#).

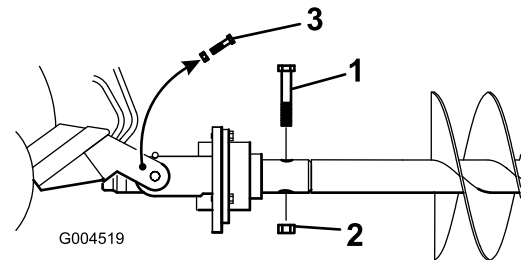


Figure 8

1. Bolt (7/8 x 4-1/2 inches)
2. Nut (7/8 inch)
3. Bolt(s) and nut(s)

11. Remove the bolts and nuts from the cradle arms installed in steps 2 (if applicable) and 5.
12. Start the engine.
13. Raise the auger free of the ground ([Figure 9](#)).

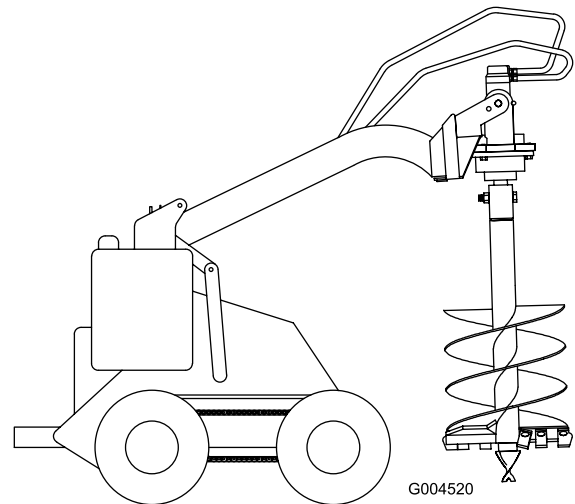


Figure 9

- When the auger is vertical, tilt the attachment plate rearward until the drive head contacts the attachment plate to stabilize the auger and keep it from swinging freely (Figure 9).

Digging a Hole

Important: Before digging, ensure that the ground is free of any trash or debris.

- Lower the auger to the soil at the site of the proposed hole.
- Move the throttle lever to the FAST position.
- If your traction unit has a speed-selector lever, move it to the SLOW position.
- If your traction unit has a flow-divider control, move it to the 10 o'clock position.
- Pull the auxiliary hydraulics lever to the operator grip or reference bar to begin digging.
- Lower the auger slowly as the soil is loosened. As you dig deeper, move the traction unit backward or forward as required to keep the auger vertical (Figure 10).

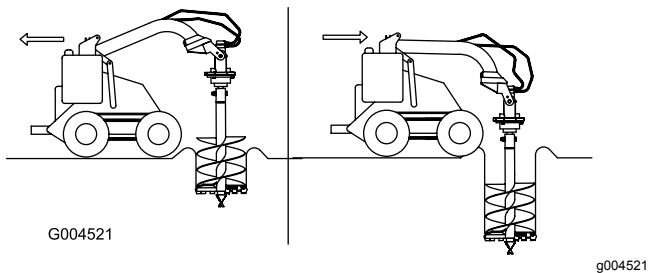


Figure 10

- When the auger becomes full of soil, disengage the auger drive and lift the auger from the hole. Engage the auger drive to spin off the soil, then resume digging.

Important: Switching the auxiliary hydraulics lever rapidly from forward to reverse will help to shake off the soil.

- When you are done digging, allow the auger to run for a few seconds to clean any loose dirt out of the hole, shut off the auxiliary hydraulics, and fully raise the auger out of the hole.

▲ DANGER

If you are using Model 22806, excessive downward force may cause the bit to wobble uncontrollably, which could tip the traction unit. You or bystanders could be pinned or seriously injured.

Do not use excessive downward pressure on the bit. Allow the bit to pull itself into the soil.

Removing an Auger

- Disengage the auxiliary hydraulics.
 - Raise the loader arms so the auger comes out of the hole.
- Note:** If you have a 24-inch extension installed between the drive head and the auger, you may need to raise the auger as high as possible and then move the traction unit backward to pull the auger the rest of the way out of the hole.
- Drive the machine to the storage location for the auger.
 - While lowering the arms, drive slowly backward until the auger is horizontal.
 - Shut off the engine and remove the key.
 - Remove the bolt and nut securing the drive head to the auger or extension.
 - Start the engine and back the traction unit away from the auger.
 - If you used an extension, remove the bolt and nut securing it and pull it off the auger.

Transport Position

- When transporting any size auger over short distances or an auger larger than 51 cm (20 inch) diameter over longer distances, do the following:
 1. Raise the auger so that it clears the ground and is vertical (Figure 9).

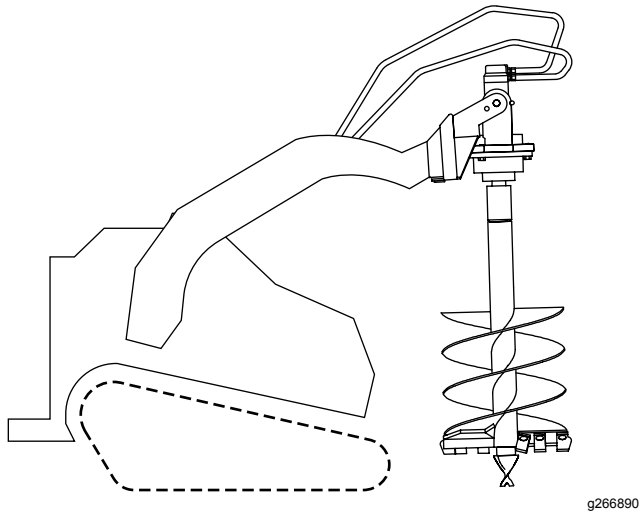


Figure 11

2. Tilt the attachment plate rearward until the drive head contacts the attachment plate to stabilize the auger and keep it from swinging freely.

- When transporting an auger smaller than 51 cm (20 inch) diameter over long distances or slopes, do the following:
 1. While lowering the arms, drive slowly backwards until the auger is horizontal, then engage the parking brake (if applicable).
 2. Shut off the engine and remove the key.
 3. Manually rotate the auger drive head up, until you can slide a bolt (1/2 x 2-1/2 inches) into the hole in the cradle arm, securing the drive head. Lightly secure the bolt with a nut (1/2 inch) as shown in Figure 5.
 4. As you transport the auger, keep it as close to the ground as possible, no more than 15 cm (6 inches) above the ground.

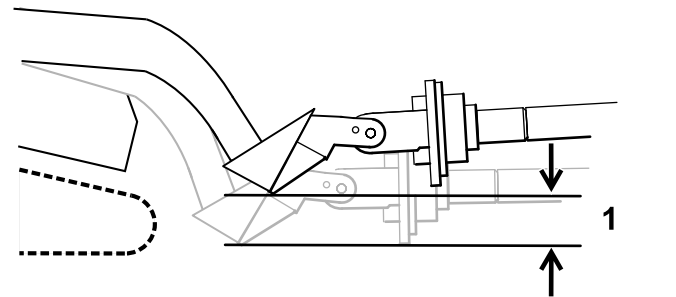


Figure 12

1. No more than 15 cm (6 inches) above the ground