

LOADING THE BTFP12569

WARNING: EYE PROTECTION which conforms to ANSI specifications and provides protection against flying particles both from the FRONT and SIDE should ALWAYS be worn by the operator and others in the work area when connecting to air supply, loading, operating or servicing this tool. Eye protection is required to guard against flying fasteners and debris, which could cause severe eye injury.



WARNING: The employer and/or user must ensure that proper eye protection is worn. Eye protection equipment must conform to the requirements of the American National Standards Institute, ANSI CAN/CSA Z89.1 and provide both frontal and side protection. NOTE: Non-side shielded spectacles and face shields alone do not provide adequate protection.

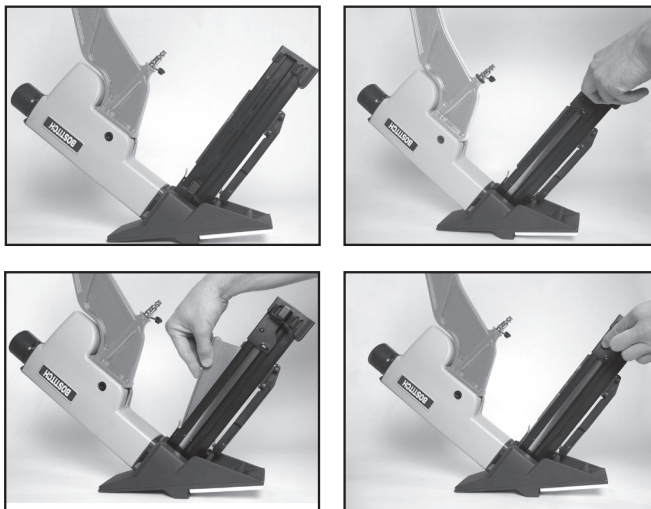
TO PREVENT ACCIDENTAL INJURIES:

- Never place a hand or any other part of the body in nail discharge area of tool while the air supply is connected.
- Never point the tool at anyone else.
- Never engage in horseplay.
- Never actuate the tool unless nose is directed at the work.
- Always handle the tool with care.
- Do not actuate the tool while loading.

BTFP12569

CLEAT/STAPLE LOADING:

Retract pusher until it is in the locked position. Insert a stick of cleats or staples. Push the detent to unlock the pusher. Slide pusher to the fully forward position. The tool is now ready to operate.



NOTE: Use only nails recommended for use in the BTFP12569 nailers or cleats which meet the BOSTITCH specifications.

BEFORE HANDLING OR OPERATING THIS TOOL:

- I. READ AND UNDERSTAND THE WARNINGS CONTAINED IN THIS MANUAL.
- II. REFER TO "TOOL SPECIFICATIONS" IN THIS MANUAL TO IDENTIFY THE OPERATING SYSTEM ON YOUR TOOL.