

# BARTELL

CONCRETE EQUIPMENT

Bartell Morrison Inc.  
375 Annagem Blvd.,  
Mississauga, ON, Canada  
L5T 2A7

Toll Free (N.A.): 1 866 501 1683

Local: +1 905 364 4200

Fax: +1 905 364 4201

## *OWNER'S MANUAL AND PARTS BOOK*

### **FORWARD PLATE COMPACTORS**

BCF1080



**ORIGINAL  
LANGUAGE**

Doc. # OI-B09051  
Orig. Rel. - 10/2013  
Curr. Rev. - 05  
Rev. Date - 08/2015

Bartell Morrison Inc.  
 375 Annagem Blvd.  
 Mississauga, Ontario, Canada  
 L5T 3A7  
 Toll Free (N.A.): (866) 501-1683  
 Phone: (905) 364-4200  
 Facsimile: (905) 364-4201  
 www.bartellmorrison.com

Bartell Morrison (USA) LLC  
 200 Commerce Drive,  
 Freehold, New Jersey, USA  
 07728  
 Toll Free: 888-999-1570  
 Phone: (732) 566-5400  
 Facsimile: (732) 566-5444  
 www.bmiamerica.com

ORIGINAL LANGUAGE PARTS MANUAL FOR  
 FORWARD PLATE COMPACTOR

© 2013 Bartell Morrison Inc.

No part of this work may be reproduced or transmitted in any form or by any means, electronic, or mechanical, including photocopying and recording, or by any information storage or retrieval system without the prior written permission of Bartell Morrison Inc, unless such copying is permitted by federal copyright laws.



Address inquiries or reference permission care of:

Bartell Morrison Inc.,  
 375 Annagem Blvd.,  
 Mississauga, Ontario,  
 Canada, L5T 3A7

| Revision | Date    | Description          | Approved By: |
|----------|---------|----------------------|--------------|
| 00       | 10/2013 | Initial Release      | AL           |
| 01       | 01/2014 | Cover photo updated. | AL           |
| 02       | 06/2014 | Address Update       | AL           |
| 03       | 07/2014 | Cover Page updated.  | AL           |
|          |         |                      |              |
|          |         |                      |              |
|          |         |                      |              |
|          |         |                      |              |

# SAFETY PRECAUTIONS

## BCF1080

| SAFETY PRECAUTIONS                                                                  |                                                                                                                                                                                                                                                                                                     |
|-------------------------------------------------------------------------------------|-----------------------------------------------------------------------------------------------------------------------------------------------------------------------------------------------------------------------------------------------------------------------------------------------------|
|    | <p> <b>DANGER</b></p> <p><b>EXPLOSION HAZARD</b><br/>Never operate the machine in an explosive atmosphere, near combustible materials or where ventilation does not clear exhaust fumes.</p>                       |
|    | <p> <b>WARNING</b></p> <p><b>BURN HAZARD</b><br/>Never come into contact with the engine or muffler when engine is operating or shortly after it is turned off. Serious burns may occur.</p>                       |
|  | <p> <b>CAUTION</b></p> <p><b>MOVING PARTS</b><br/>Before starting the machine ensure that all guards and safety devices are in place and functioning properly.</p>                                               |
|  | <p> <b>CAUTION</b></p> <p><b>MACHINE DAMAGE</b><br/>Never operate on hard, unyielding surfaces. Unwarranted damage may result.</p>                                                                               |
|  | <p> <b>ATTENTION</b></p> <p><b>READ OWNERS MANUAL</b><br/>Read and understand operator's manual before using this machine. Failure to follow operating instructions could result in serious injury or death.</p> |

# OPERATOR'S MANUAL

## BCF1080

|                                                   |    |
|---------------------------------------------------|----|
| QUALITY ASSURANCE / MACHINE BREAK IN              | 5  |
| WARRANTY INFORMATION                              | 6  |
| SPECIFICATIONS                                    | 7  |
| PREVENTATIVE MAINTENANCE AND ROUTINE SERVICE PLAN | 8  |
| ROUTINE SERVICE INTERVALS                         | 10 |
| FOREWARD                                          | 11 |
| SAFETY PRECAUTIONS                                | 11 |
| OPERATING PRINCIPLE                               | 11 |
| STARTING PROCEDURE                                | 11 |
| STOPPING PROCEDURE                                | 11 |
| PRIOR TO OPERATION                                | 12 |
| OPERATION                                         | 12 |
| LUBRICATION                                       | 12 |
| MAINTENANCE                                       | 13 |
| STORAGE                                           | 13 |
| ASSEMBLY DRAWINGS AND PARTS LIST                  |    |
| - FULL ASSEMBLY                                   | 16 |

## QUALITY ASSURANCE / MACHINE BREAK IN BCF1080

The Bartell Vibratory Plate Compactor is the product of extensive engineering development designed to give long life and unmatched performance. The Compactors are shipped completely assembled with the exception of attaching the handle, and only require filling with fuel and a brief check of lubricant levels in preparation for operation. The exciter housing are pre-serviced with oil at factory.

You can help ensure that your Vibratory Plate Compactor will perform at top levels by observing a simple routing on first use. Consider that your new Compactor is like a new car. Just as you would break in a new car to the road or any new machine to the job, you should start gradually and build up to full use. Learn what your machine can do and how it will respond. Refer to the engine manufacturer's manual for run-in times. Full throttle and control may be used after this time period, as allowed by material. This will serve to further break in the machine on your specific application, as well as provide you with additional practice using the machine.

We thank you for the confidence you have placed in us by purchasing a Bartell Vibratory Plate Compactor and wish you many years of satisfied use.

# WARRANTY

## BCF1080

Bartell agrees to furnish without charge, F.O.B. our plant, a replacement for any part or portion thereof, comprising the main unit of the Bartell Vibratory Plate Compactor, consisting of the exciter housing assembly, save and except drive belts, and power units, prove upon our examination, to be defective in either material or workmanship within a period of twelve (12) months from date of purchase, provided that notice of such defective part or portion thereof is given to Bartell Ltd. within the twelve month warranty period. No further or other guarantee or warranty expressed or implied in connection with the sale of the Compactor is given and our sole liability consists in replacing defective parts or portions thereof. We shall not be responsible for any special, indirect or consequential damages arising in any manner whatsoever.

This guarantee is for the sole benefit of the original purchaser as end user. Our responsibility under this guarantee ends in the case the original purchaser transfers ownership of the Vibratory Plate Compactor, makes any changes or adds any parts or devices not of our manufacture to the Compactor machine.

# SPECIFICATIONS

## BCF1080

|                                 |                   |
|---------------------------------|-------------------|
| <b>DIMENSIONS</b>               |                   |
| OVERALL LENGTH, mm (in.)        | 700 (28")         |
| OVERALL WIDTH, mm (in.)         | 390 (16")         |
| OVERALL HEIGHT, mm (in.)        | 570 (             |
| PLATE SIZE (WxL), mm (in.)      | 350x550           |
| <b>WEIGHT</b>                   |                   |
| NET WEIGHT, kg (lb.)            | 60                |
| OPERATING WEIGHT, kg (lb.)      | 65                |
| <b>PERFORMANCE</b>              |                   |
| TRAVELING SPEED, m/min (ft/min) | 20~25             |
| VIBRATING FREQUENCY, Hz (vpm)   | 6000              |
| CENTRIFUGAL FORCE, lb(kN (kgf)) | 10.5(1080)        |
| WATER TANK CAPACITY (L)         | 15                |
| <b>POWER SOURCE</b>             |                   |
| MANUFACTURER                    | Honda/Robin       |
| MODEL                           | GX160/EX17        |
| MAX. OUTPUT                     | 4.8(3.6)/5.7(4.2) |
| @ RPM                           | 3600/4000         |
| STARTING SYSTEM                 | Recoil            |

# PREVENTATIVE MAINTENANCE AND ROUTINE SERVICE PLAN BCF1080

This Bartell Vibratory Plate Compactor has been assembled with care and will provide years of service. Preventative maintenance and routine service are essential to the long life of your Compactor Machine. Your dealer is interested in your new machine and has the desire to help you get the most value from it. After reading through this manual thoroughly, you will find that you can do some of the regular maintenance yourself. However, when in need of parts or major service be sure to see your Bartell dealer. For your convenience we have provided this space to record relevant data about your Vibratory Plate Compactor. When in need of parts or service be prepared to provide your Compactor serial number. Locate the serial number now and record in the space below.

|                 |  |                  |  |
|-----------------|--|------------------|--|
| Date Purchased: |  | Type of Machine: |  |
| Dealer Name:    |  | Model:           |  |
| Dealer Phone:   |  | Serial Number:   |  |

| Replacement Parts Used |          |      |      | Maintenance Log |           |
|------------------------|----------|------|------|-----------------|-----------|
| Part No.               | Quantity | Cost | Date | Date            | Operation |
|                        |          |      |      |                 |           |
|                        |          |      |      |                 |           |
|                        |          |      |      |                 |           |
|                        |          |      |      |                 |           |
|                        |          |      |      |                 |           |
|                        |          |      |      |                 |           |
|                        |          |      |      |                 |           |
|                        |          |      |      |                 |           |
|                        |          |      |      |                 |           |
|                        |          |      |      |                 |           |
|                        |          |      |      |                 |           |
|                        |          |      |      |                 |           |
|                        |          |      |      |                 |           |
|                        |          |      |      |                 |           |
|                        |          |      |      |                 |           |
|                        |          |      |      |                 |           |
|                        |          |      |      |                 |           |
|                        |          |      |      |                 |           |
|                        |          |      |      |                 |           |
|                        |          |      |      |                 |           |
|                        |          |      |      |                 |           |
|                        |          |      |      |                 |           |
|                        |          |      |      |                 |           |
|                        |          |      |      |                 |           |
|                        |          |      |      |                 |           |
|                        |          |      |      |                 |           |
|                        |          |      |      |                 |           |
|                        |          |      |      |                 |           |
|                        |          |      |      |                 |           |
|                        |          |      |      |                 |           |
|                        |          |      |      |                 |           |
|                        |          |      |      |                 |           |
|                        |          |      |      |                 |           |
|                        |          |      |      |                 |           |
|                        |          |      |      |                 |           |



# ROUTINE SERVICE BCF1080

| Routine Service Intervals  |                 | Each use | After 1.5 months or 50 hrs | Each 3 months or 100 hrs | Each 6 months or 200 hrs | Each 9 months or 300 hrs | Each 12 months or 400 hrs |
|----------------------------|-----------------|----------|----------------------------|--------------------------|--------------------------|--------------------------|---------------------------|
| <b>General Inspection:</b> |                 |          |                            |                          |                          |                          |                           |
| Guards                     | Check           |          | o                          | o                        | o                        | o                        | o                         |
|                            | Check           |          | o                          | o                        | o                        | o                        | o                         |
|                            | Check Operation |          | o                          | o                        | o                        | o                        | o                         |
| <b>Engine:</b>             |                 |          |                            |                          |                          |                          |                           |
| Engine Oil                 | Check Level     | o        | o                          | o                        | o                        | o                        | o                         |
|                            | Change          |          | o                          |                          | o                        |                          | o                         |
| Oil Cooler                 | Clean           |          |                            | o                        | o                        | o                        | o                         |
| Cooling Fins               | Clean           |          | o                          | o                        | o                        | o                        | o                         |
| Air Cleaner                | Check - Clean   | o        | o                          | o                        | o                        | o                        | o                         |
|                            | Replace         |          |                            |                          |                          |                          | o                         |
| Air Intake Line            | Check           |          |                            |                          | o                        |                          |                           |
|                            | Replace         |          |                            |                          |                          |                          | 2 yrs                     |
| Fuel Filter                | Check & Clean   |          |                            | o                        | o                        | o                        | o                         |
|                            | Replace         |          |                            |                          | o                        |                          | o                         |
| Fuel Tank                  | Clean           |          |                            |                          |                          |                          | 500 hrs                   |
| Engine Wiring              | Check           |          |                            |                          |                          |                          | o                         |
| <b>Exciter:</b>            |                 |          |                            |                          |                          |                          |                           |
| Exciter Oil                | Check Level     | o        | o                          | o                        | o                        | o                        | o                         |
|                            | Change          | o        |                            |                          | o                        |                          | o                         |
| Drive Belt                 | Check Tightness | o        | o                          | o                        | o                        | o                        | o                         |
|                            | Change          |          |                            |                          | o                        |                          | o                         |

# ROUTINE SERVICE INTERVALS

## BCF1080

Due to the nature and environment of use, plate compactors could be exposed to severe operating conditions. Some general maintenance guidelines will extend the useful life of your machine.

- The initial service for your compactor should be performed after 25 hours of use, at which time your mechanic (or authorized repair shop) should complete all of the recommended checks in the schedule above. The chart on page 6 (six) is handy for keeping a record of the maintenance performed and the parts used for servicing your compactor.
- Regular service according to the schedule above will prolong the life of the plate compactor and prevent expensive repairs.
- Keeping your plate compactor clean and free from debris is the single most important regular maintenance operation, over and above the checks in the service schedule above, that can be performed. After each use your compactor should be cleaned to remove any dust and debris from the undercarriage and surrounding components. Use of a power washer will make clean up quick and easy, especially if a non-stick coating was applied prior to use.
- In the Service Schedule above, items that should be checked, replaced or adjusted are indicated by "o" in the appropriate column. Not all plate compactor models include the same features and options and as such not all service operations may have to be performed. For ease of recording place a checkmark through the "o" when the item is complete. If an item is not required or not completed place an "x" through the "o" in the box.
- All compactors have governed engine speed of 3600 rpm. See engine manufacturer's manual for exact specifications. Care should be used when making any adjustments to the compactor not to change the governed speed. Running the engine at lower rpm's will result in a decrease of compaction force and lower travel speed. It will create excessive "out-of-synch" vibrations resulting in poor compaction, maneuverability, excessive wear to the machine, and discomfort to the operator.
- Failure to have your vibratory plate compactor regularly serviced and properly maintained in accordance with the manufacturer's instructions will lead to premature failure and void the warranty.

# BCF1080

## FOREWORD

The Bartell Vibratory Plate Compactor is highly effective for a wide variety of surface, sub-soil, and back-fill materials. Although relatively light in weight and easy to operate, the Vibratory Plate Compactor delivers a tremendous impact to the soil. Pound for pound, the compactors provide a higher impact force. That means more productivity from our ideal combination of speed and deeper compaction.

## SAFETY PRECAUTIONS

- Always keep unauthorized, inexperienced, untrained people away from this machine.
- Rotating and moving parts will cause injury if contacted. Make sure guards are in place. Keep hands and feet away from moving parts.
- Fuel the machine only when the engine is stopped, using all necessary safety precautions.
- The engine must always be stopped before attempting any repair or adjustments. Ignition switch should be off. Danger: Never operate the machine in an explosive atmosphere, near combustible materials or where ventilation does not clear exhaust fumes. Repair fuel leaks immediately. Refer to your engine owner's manual for more safety instructions.
- Be careful not to come in contact with the muffler when the engine is hot, serious burns may result!

## OPERATING PRINCIPLE

An eccentric weight mounted on the exciter shaft contained within the exciter housing is driven at high speed by a clutch and belt drive system. This high speed shaft revolution causes the rapid lifting and downward ramming motion of the machine as well as imparting a forward motion.

The plate compactor is designed to run at an engine speed (engine take off shaft) of 3600 rpm. (normally considered full throttle).

Running the engine at lower rpm's will result in a decrease of compaction force and lower travel speed. It will create excessive "out-of-synch" vibrations resulting in poor compaction, maneuverability, excessive wear to the machine, and discomfort to the operator.

## STARTING PROCEDURE:

### \* WARM CLIMATE

Open fuel valve on gas tank. Set throttle lever to "Fast" idle position, set choke to closed position, start engine. Open choke slightly to prevent flooding. Move to "Open" or "Run" position when engine is warm, increase throttle to maximum operation position (3600 rpm).

## STARTING PROCEDURE:

### \* COLD CLIMATE

Follow same procedure as above but allow longer warm-up period – 3 to 5 minutes. In cold weather, oil is much heavier to move and requires more time to work its way into the moving parts. If maximum power is not attained, allow further warm-up time. Fill fuel tank with clean gasoline, use safety approved gas containers. **DO NOT MIX OIL WITH GASOLINE – USE UNLEADED GAS ONLY.**

## STOPPING PROCEDURE

1. Throttle engine down.
2. Depress or turn off stop switch.

# BCF1080

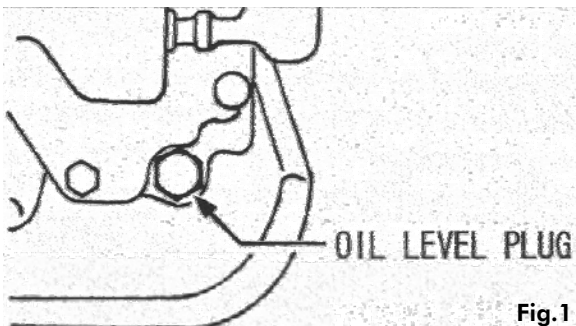
## PRIOR TO OPERATION

1. Make sure that all dirt, mud, etc., are thoroughly removed from the unit prior to operation. Special effort should be given to the bottom face of the vibrating plate and those areas adjacent to the cooling air inlet of engine, carburetor, and air cleaner.
2. Check all bolts and screws for tightness and make sure all bolts and screws are securely tightened. Loose bolts and screws may cause damage to the unit.
3. Check the V-belt for tightness. The normal slack should be approximately 10-15mm (1/2") when the belts are forcibly depressed in the middle position between the two sheaves. If there is excess belt play, there could be a decrease in the impact force or erratic vibration, causing machine damage.
4. Check the engine oil level and if the engine oil level is low, it should be refilled. Use the proper motor oil as suggested by the engine manufacturer.
5. Remove the oil plug in the excitor base and check the oil level. Make sure the compactor is level when checking. The oil level should be up to the oil plug. Every month or every 200 hours of operation, replace the oil. (Fig.1)

### IMPORTANT:

- When changing the oil, the old oil can be drained by tipping the unit. The oil will drain easily while it is hot.

| Season      | Temperature   | Grade of Exciter Oil |
|-------------|---------------|----------------------|
| Summer      | 25C or higher | SAE#30               |
| Spring/Fall | 25C~10C       | SAE#30, #20          |
| Winter      | 0C~10C        | SAE#10               |



6. A regular grade gasoline should be used in the engine. When filling the fuel tank, make sure the fuel filter is used.

## OPERATION

1. In operation, guide the machine, but let the compactor do the work. Bearing down on the handle is unnecessary and causes shock absorber wear. On level surfaces the compactor moves forward rapidly. On uneven surfaces or inclines, light forward pressure on handle may be required to assist the compactor in moving forward.
2. ALWAYS OPERATE THE MACHINE AT FULL THROTTLE. If excessive vibration is felt through the handle, do not operate until the engine is checked and set at its maximum running speed of 3600 rpm. Insure the drive belt is adjusted properly. Refer to belt tension-section.

# BCF1080

## MAINTENANCE

Maintaining your compactor will insure long life to the machine and its components.

**AIR CLEANER** - Keep air filter clean at all times.

Wash away dust and debris using a non-oil based cleaning solvent. Let the filter dry before re-installing.

**LUBRICATION** – Always check engine oil regularly.

Use proper engine oil as recommended. See chart below. Fill crankcase to levels as recommended in manufacture's engine manual.

**SPARK PLUG** – Check and clean spark plugs regularly. A fouled, dirty or carboned spark plug causes hard starting and poor engine performance. Set spark plug gap to recommended clearance. Refer to engine manual.

**BELT TENSION** – IMPORTANT!

If there is excessive belt play, there will be a decrease in the impact force and erratic vibration, which could cause machine damage. The normal belt play should be 1/2" to 5/8" which is attained by depressing the top section of the belt at the belt guard mounting bracket location. When adjusting the belt make sure that the clutch is in alignment with exciter pulley. Tighten all engine mount bolts, adjust the two engine-stop bolts, and tighten lock nuts.

## STORAGE

The following steps should be taken to prepare your plate compactor for extended storage.

1. Close fuel shut off valve.
2. Siphon excess gasoline from tank.
3. Start engine until it stops from lack of fuel. This will use up all the fuel in the carburetor and prevent formation of deposits due to evaporation of fuel. Remove spark plug and pour 2 oz. of SAE 10W-30 motor oil into the cylinder. Slowly crank the engine 2 or 3 times to distribute the oil throughout the cylinder.
4. This will help prevent rust during storage. Replace spark plug.
5. Store the unit in an upright position in a cool, dry, well ventilated area.

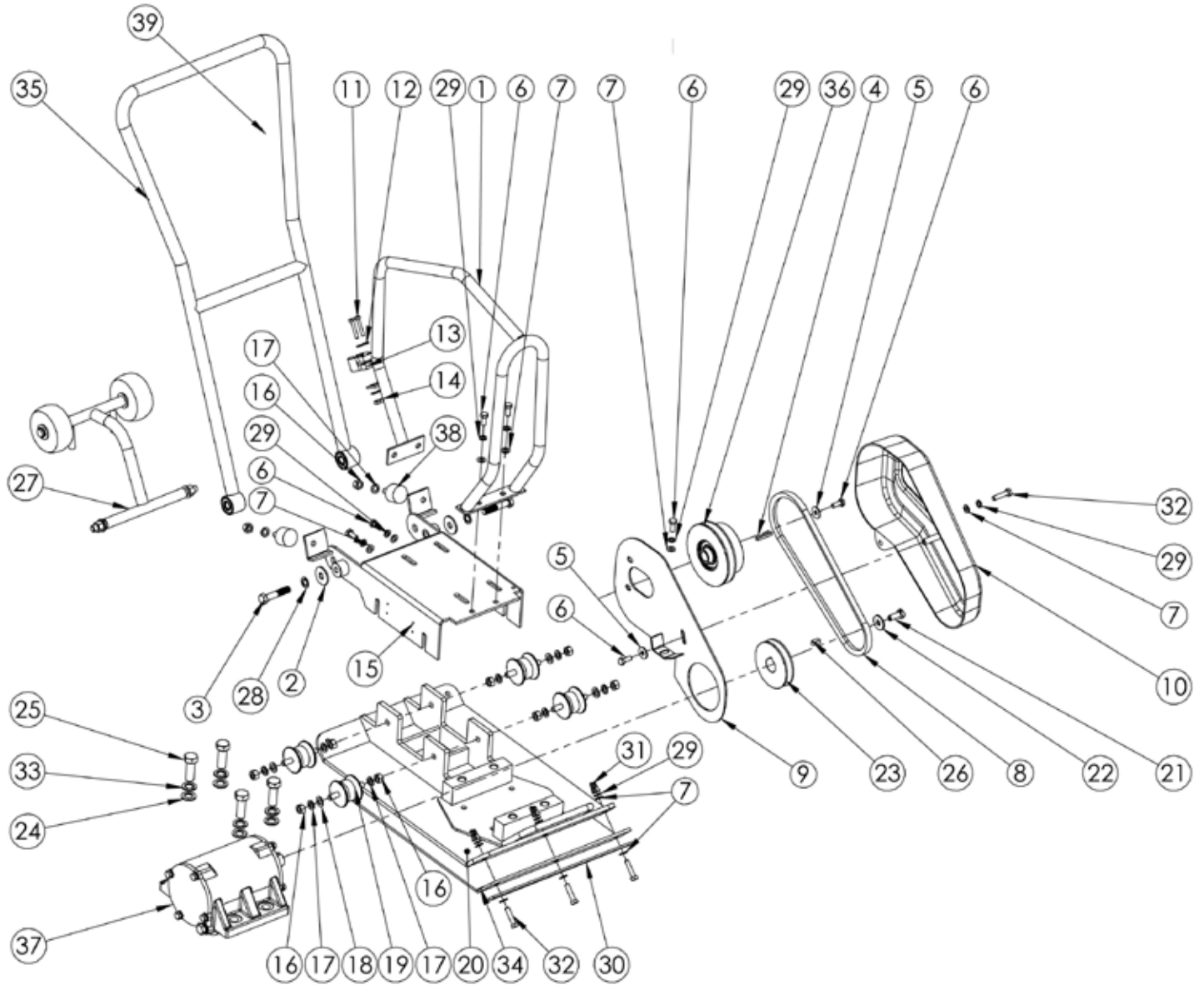
THIS PAGE HAS BEEN INTENTIONALLY LEFT BLANK

**BCF1080**  
**ASSEMBLY DRAWINGS AND PARTS**  
**LIST**

# PARTS LIST 1

## BCF1080

### FULL ASSEMBLY





# PARTS LIST 1

## BCF1080

### FULL ASSEMBLY

| ITEM NO. | PART NO.     | DESCRIPTION                  | QTY. | REMARKS |
|----------|--------------|------------------------------|------|---------|
| 1        | 101237-01001 | ENGINE FRAME                 | 1    |         |
| 2        | 101237-01020 | PLAIN WASHER M13             | 2    |         |
| 3        | 101237-01021 | HEX HEAD BOLT M12x60x30      | 2    |         |
| 4        | 101237-01023 | PARALLEL KEY                 | 1    |         |
| 5        | 101237-01030 | PLAIN WASHER M8.4            | 2    |         |
| 6        | 101237-01031 | HEX HEAD BOLT M8x20          | 7    |         |
| 7        | 101237-10133 | PLAIN WASHER M8.4            | 12   |         |
| 8        | 101237-01034 | V-BELT AVX 13x825La          | 1    |         |
| 9        | 101237-01035 | BELT COVER                   | 1    |         |
| 10       | 101237-01036 | COMPACT COVER ASSEMBLY       | 1    |         |
| 11       | 101237-01046 | HEX HEAD BOLT M6x35          | 2    |         |
| 12       | 101237-01047 | PLAIN WASHER M6.4            | 4    |         |
| 13       | 101237-01048 | CASTER HOLDERS               | 1    |         |
| 14       | 101237-01050 | HEX NUT M6                   | 2    |         |
| 15       | 101237-01070 | ENGINE SUPPORT ASSEMBLY      | 1    |         |
| 16       | 101237-01073 | HEX NUT M10                  | 10   |         |
| 17       | 101237-01074 | SPRING WASHER M10.2          | 10   |         |
| 18       | 101237-01075 | PLAIN WASHER M10.5           | 4    |         |
| 19       | 101237-01076 | VIBRATOR ISOLATOR BFR-BF2074 | 4    |         |
| 20       | 101237-01083 | COMPACTOR PLATE ASSEMBLY     | 1    |         |
| 21       | 101237-01092 | HEX HEAD BOLT M10x25         | 1    |         |
| 22       | 101237-01093 | PLAIN WASHER M10.5           | 1    |         |
| 23       | 101237-01094 | PULLEY                       | 1    |         |
| 24       | 101237-01102 | PLAIN WASHER M17             | 4    |         |
| 25       | 101237-01103 | HEX HEAD BOLT M16x45         | 4    |         |
| 26       | 101237-01104 | PARALLEL KEY                 | 1    |         |
| 27       | 101237-01111 | WHEEL ASSEMBLY               | 2    |         |
| 28       | 101237-01112 | SPRING WASHER M12.2          | 2    |         |
| 29       | 101237-01113 | SPRING WASHER M8.1           | 9    |         |
| 30       | 101237-01114 | MOUNTING STRIP               | 1    |         |
| 31       | 101237-01115 | WING NUT M8                  | 3    |         |
| 32       | 101237-01116 | HEX HEAD BOLT M8             | 4    |         |
| 33       | 101237-01117 | SPRING WASHER M16.2          | 4    |         |
| 34       | 101248-01024 | COMPACTOR RUBBER             | 1    |         |

# PARTS LIST 1

## BCF1080

### FULL ASSEMBLY (cont'd)

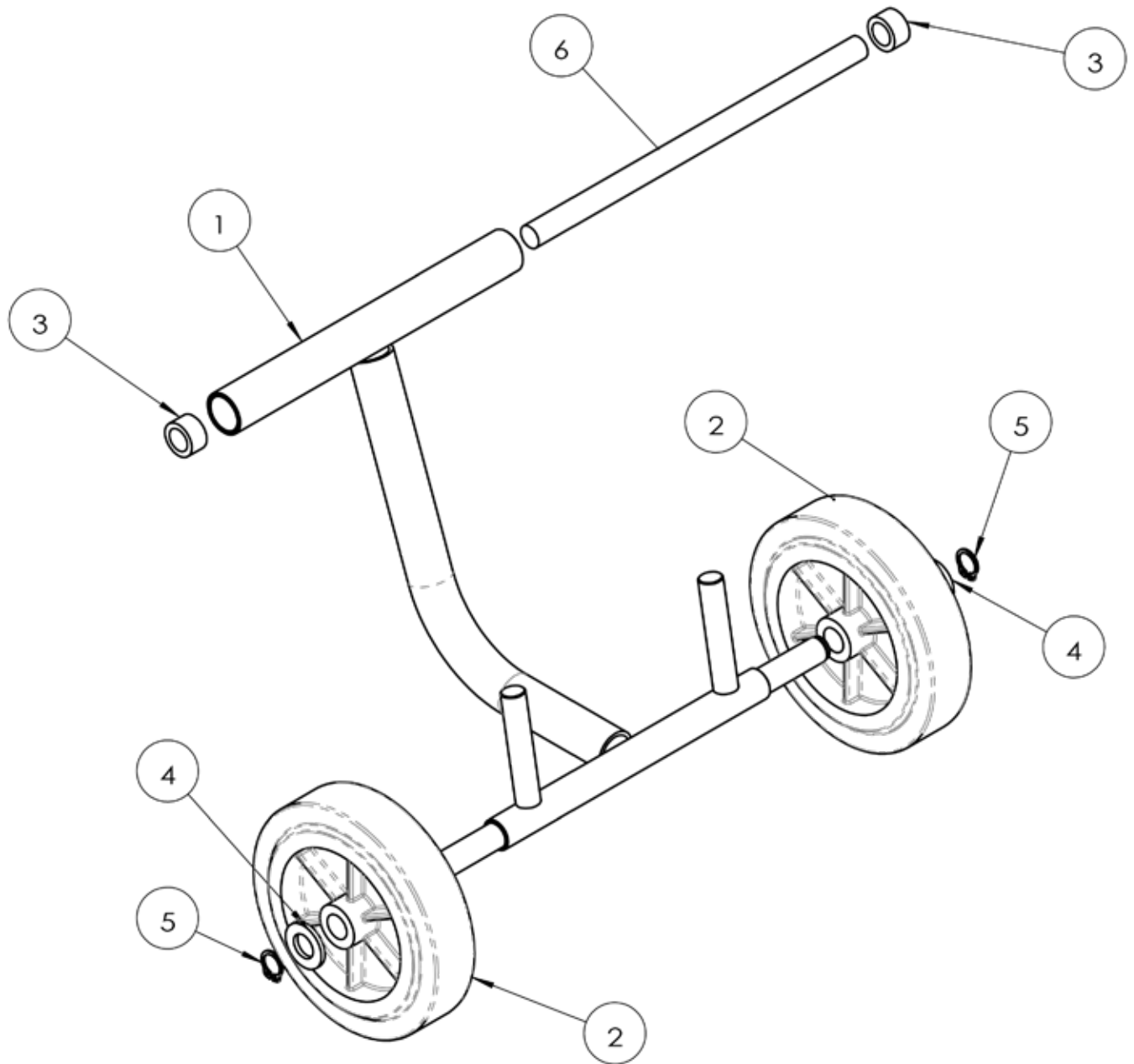
| ITEM NO. | PART NO.     | DESCRIPTION                    | QTY. | REMARKS |
|----------|--------------|--------------------------------|------|---------|
| 35       | 101539-01005 | HANDLE ASSEMBLY                | 1    |         |
| 36       | 101539-01008 | CLUTCH 130/20                  | 1    |         |
| 37       | 101539-01021 | VIBRATOR ASSEMBLY              | 1    |         |
| 38       | 101539-01030 | VIBRATOR ISOLATOR BB-35/35-B   | 2    |         |
| 39       | 651050       | THROTTLE LEVER WITH CABLE ASSY | 1    |         |

THIS PAGE HAS BEEN INTENTIONALLY LEFT BLANK

# PARTS LIST 2

## BCF1080

### WHEELS



# PARTS LIST 2

## BCF1080

### WHEELS

| ITEM NO. | PART NO.      | DESCRIPTION  | QTY. | REMARKS |
|----------|---------------|--------------|------|---------|
| 1        | CPC-E60-W-001 | WHEELS FRAME | 1    |         |
| 2        | CPC-E60-W-002 | WHEELS       | 2    |         |
| 3        | CPC-E60-W-003 | COLLAR       | 2    |         |
| 4        | CPC-E60-W-004 | WASHER M12   | 2    |         |
| 5        | CPC-E60-W-005 | CIRCLIP M12  | 2    |         |
| 6        | CPC-E60-W-006 | SHAFT        | 1    |         |



# BARTELL

BARTELL MORRISON INC.



## **BARTELL MORRISON INC.**

375 Annagem Blvd.  
Mississauga, Ontario, Canada  
L5T3A7

Toll Free: 866-501-1683

Local: 905-364-4200

Fax: 905-364-4201

[www.bartellmorrison.com](http://www.bartellmorrison.com)

## **BARTELL MORRISON (USA) LLC.**

200 Commerce Dr.  
Freehold, New Jersey, USA  
07728

Toll Free: 888-999-1570

Local: 732-566-5400

Fax: 732-566-5444

[www.bmiamerica.com](http://www.bmiamerica.com)

**BARTELL morrison** **SPE** **Innovatech™**  
CONCRETE EQUIPMENT CONCRETE EQUIPMENT Surface Preparation Equipment

