



Mini Brush Mower

For

Mini Skid Steer Loaders

And

Mini Track Loaders

Operator's Manual

Maintenance

Parts Information



Read this Manual Before Use

TABLE OF CONTENTS

SAFETY	3-4
SERIAL NUMBER/DECAL LOCATION	5-6
USERS INSTRUCTIONS FOR MOUNTING THE MINI BRUSH MOWER	7-8
OPERATING THE MINI BRUSH MOWER	9
ROUTINE MAINTENANCE	10-14
NOTES	15
PARTS INFORMATION	16-17
GENERAL SPECIFICATIONS	18
WARRANTY	19

REFERENCE INFORMATION

Write the correct information for YOUR MINI BRUSH MOWER in the spaces below. Always use these numbers when referring to your MINI BRUSH MOWER.

MINI BRUSH MOWER Serial Number.....

YOUR ATTACHMENTS DEALER

ADDRESS:

PHONE:

CONTACT:

NOTE: *Erskine Attachments LLC reserves the right to make improvements in design or changes in specifications at any time without notice and without incurring any obligations to install them on units previously sold.*

SAFETY

DO NOT use or perform maintenance on this machine until this manual has been read and understood. In addition, read the Operation and Maintenance Manual(s) pertaining to the attachment and the attachment carrier (“Loader”).

The user is responsible for inspecting the machine daily, and for having parts repaired or replaced when continued use of the machine would cause damage, excessive wear to other parts or make the machine unsafe for continued operation.

If an operating procedure, tool device, maintenance or work method not specifically recommended is used, you must satisfy yourself that it is safe for you and others. You must also ensure that the attachment will not be damaged or made unsafe by the procedures you choose.

Erskine Attachments LLC cannot anticipate every possible circumstance that might involve potential hazard. The safety messages found in this manual and on the machine are therefore not all inclusive.

The signal words **CAUTION**, **WARNING**, or **DANGER** are used to indicate hazards.

⚠ CAUTION Indicates a potentially hazardous situation which, if not avoided, may result in minor or moderate injury.

⚠ WARNING Indicates a potentially hazardous situation which, if not avoided, could result in death or serious injury.

⚠ DANGER Indicates a potentially hazardous situation which, if not avoided, will result in death or serious injury.

The word **IMPORTANT** is used in the text when immediate damage will occur due to improper technique or operation.

The word **NOTE** is used to convey information that is out of context with the manual text; special information such as specifications, techniques, reference information, and other information of a supplementary nature.

SAFETY

Improper operation can cause serious injury or death.

Pre-operation

- The Mini Brush Mower is designed to cut short or tall grass and brush. **NEVER** use this machine for any other purpose.
- Read the operator's manual for the "Skid Steer Loader". **NEVER** allow untrained people to operate.
- Operating instructions must be given to everyone before operating this machine and at least once a year thereafter in accordance with OSHA regulations.
- **NEVER** exceed the maximum recommended input power or speed specifications for the attachment. Over-powering or over-speeding the attachment may cause personal injury and/or machine damage.
- Keep all shields, guards, and covers in place.
- Do not modify equipment or add attachments that are not approved by Erskine Attachments LLC.
- Use adequate safety warning lights and devices as required by local regulations. Obey all local laws and regulations regarding machine operation on public property.

Operation

- Always wear eye protection that meets z87.1 or use with a loader enclosure that provides similar protection.
- Hydraulic connections may be hot after use. Use gloves if connecting or disconnecting after use.
- Check and be sure all operating controls are in neutral before starting the engine.
- Keep people away from loader, attachment and discharge when in use. This attachment sends objects flying and has rotating parts. **NEVER** direct discharge toward people – rocks and debris can be thrown hundreds of feet.

Operation (continued)

- **NEVER** operate near embankments or terrain that is so steep that rollover could occur.
- Always stay in the operator position when using the attachment.
- Before leaving the operators position, disengage hydraulic drive, lower the attachment to rest flat on the ground, stop engine, set park brake, and wait for all motion to stop.
- **NEVER** place hands in the discharge area or clear debris while engine is running.

Avoid High Pressure Fluids Hazard



- Escaping fluid under pressure can penetrate the skin causing serious injury.
- Avoid the hazard by relieving the pressure before disconnecting hydraulic lines.
- Use a piece of paper or cardboard, NOT BODY PARTS, to check for suspected leaks. Wear protective gloves and safety glasses or goggles when servicing or performing maintenance on hydraulic systems.
- If an accident occurs, see a doctor immediately. Any fluid injected into the skin must be surgically removed within a few hours or gangrene may result.

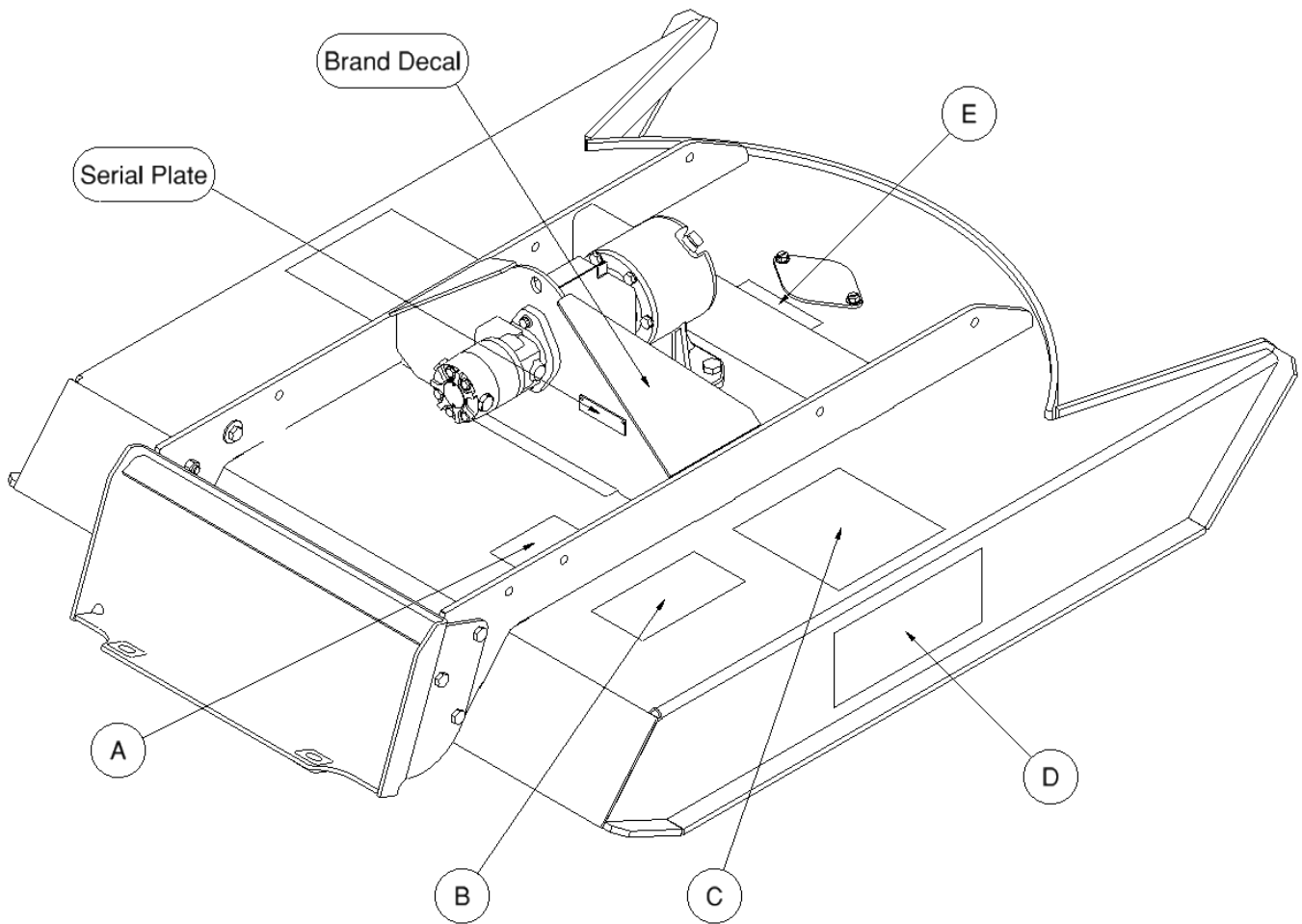
Maintenance

- **NEVER** make adjustments, lubricate, clean, or perform any service on the machine while it is in operation.
- Make sure the attachment is serviced on a daily basis. Improper maintenance can cause serious injury or death in addition to damage to the attachment and/or your equipment.

SERIAL NUMBER AND SAFETY DECAL LOCATIONS

Serial Number Location:

It is important to refer to the serial number of the attachment when making repairs or ordering parts. Early or later models (identification made by serial number) may use different parts, or it may be necessary to use different procedures in doing a specific operation.



SERIAL NUMBER AND SAFETY DECAL LOCATIONS

(A)



Location: On top right back side of deck
Part Number: 200001 **Quantity:** 1

(B)



Location: On the top right side of deck
Part Number: 314158 **Quantity:** 1

(D)



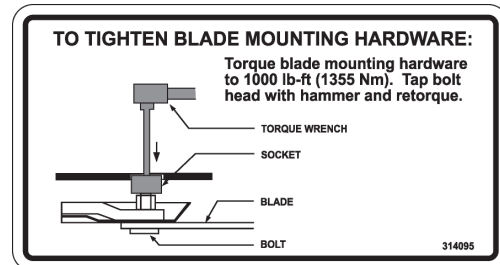
Location: On the right and left sides of deck
Part Number: 400493 **Quantity:** 2

(C)



Location: On top of deck (right and left)
Part Number: 314094 **Quantity:** 2

(E)



Location: Next to blade bolt access cover
Part Number: 314095 **Quantity:** 1

Location: On both sides of motor mount
Mini Brand Decal **Quantity:** 2

Safety Decals Locations:

The locations of the safety decals are shown. If these decals are missing, damaged, or painted over they must be replaced. Call Erskine Attachments LLC (218-435-4045) for replacement decals.

USER'S INSTRUCTIONS FOR MOUNTING THE MINI BRUSH MOWER

After the initial set-up assembly is completed use the following procedure to mount the attachment to the loader.

⚠ WARNING Coupler wedges or pins must extend through the holes in the attachment mounting plate. Levers must be fully down and locked. Failure to secure wedges or pins can allow attachment to come off and cause injury or death.

Instructions for mounting to a ride-on mini skid loader:

1. Use the step, safety treads, and grab handles to get on and off the loader.
2. Sitting in the operator's seat, lower seat bar, fasten the seat belt and with the controls in a neutral position, start the engine.
3. Drive the loader to the rear of the attachment. Put the loader quick attach coupler into the attachment mounting bracket.
4. Tilt the loader coupler backward a small amount until it is fully engaged in the attachment mounting bracket.
5. Stop the engine and engage the park brake.
6. Exit the loader and secure the coupler locking mechanism that locks the attachment to the loader.
7. Route the lift limit chain over the boom cross-member and down through a hole in the front frame. Then latch the end of the chain back to itself allowing for some slack.

Instructions for mounting to a walk-behind mini skid loader:

1. Standing at the operator's station with the controls in a neutral position, start the engine.
2. Drive the loader to the rear of the attachment. Put the loader quick attach coupler into the attachment mounting bracket.
3. Tilt the loader coupler backward a small amount until it is fully engaged in the attachment mounting bracket.
4. Stop the engine and engage the park brake.
5. Walk to the front of the loader and secure the coupler locking mechanism that locks the attachment to the loader.
6. Route the lift limit chain over the boom cross-member and down through a hole in the front frame. Then latch the end of the chain back to itself allowing for some slack.

USER'S INSTRUCTIONS FOR MOUNTING THE MINI BRUSH MOWER

⚠ WARNING Never operate without lift limit chain installed. Never modify the lift limit chain. To reduce the risk of injury or death check that is operating properly when you first use a machine, after service, or anytime someone may have disconnected the lift limit chain.

Attaching Hydraulics:

1. Connect the hydraulic quick couplers from the Mini Brush Mower to the loader.

Be sure to thread the hoses through the hose holder on the loader. Bungee straps can be used as an alternate method of securing the hoses.

IMPORTANT: Make sure the quick couplers are fully engaged. If the quick couplers do not fully engage, check to see that the couplers are the same size and brand. Do not force the quick couplers together.

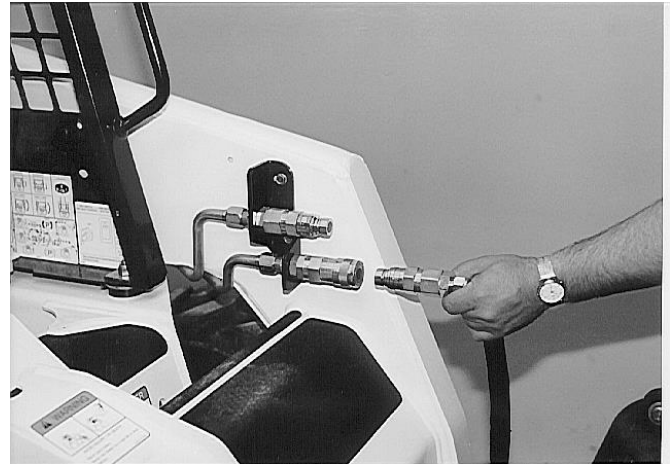
IMPORTANT: Wipe the ends of the hydraulic quick couplers (both lead and loader) with a rag to remove any possible contamination. Contamination can cause hydraulic components to fail and is not covered under warranty.

2. Make sure the hoses are properly routed to fit your specific loader. If the hoses are not routed correctly, hoses may get pinched or rub on tires. Be sure to check the hose routing through the full range of intended motion of the attachment before operating it.

More than one routing may be acceptable depending on the loader. Pick the routing that best suits your loader.

IMPORTANT: Proper hose routing is the responsibility of the owner and/or operator. Pinched or stretched hoses are not covered under warranty.

Mounting is now complete and you are ready to use the attachment. Use reverse order of above instructions to dismount the attachment from the loader.



NOTE: Attachment is shipped with 12FJX (1-1/16" Female JIC Swivel) fittings on the ends of the lead hoses.

OPERATING THE MINI BRUSH MOWER

The type of brush being cut and the ground conditions will determine the best ground speed and cutting procedure. The mini brush mower is designed to cut short or tall grass and brush.

IMPORTANT: Before operating the attachment, perform the service schedule for routine maintenance.

1. Inspect the cutting area for obstructions such as stumps, wire, rocks, electrical lines, debris, drop offs, holes, etc. Remove obstructions from the cutting area that might be picked up and thrown.
2. With the operator in the seat of the loader, the seat belt fastened and the seat bar lowered, start the engine.

⚠ WARNING To improve stability, always carry attachment low to the ground while driving.

IMPORTANT: Do not operate attachment when excessive vibration is present. Serious damage can occur. Check blades and gearbox.

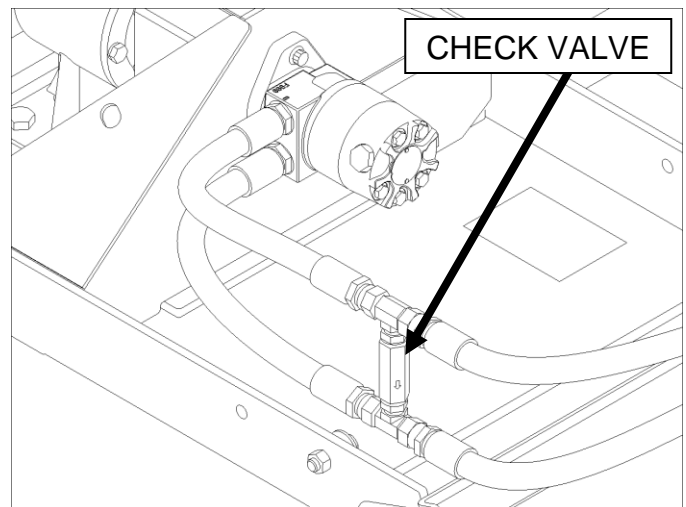
3. With the engine at low RPM, lower the loader lift arms fully and position the mini brush mower flat on the ground.
4. Engage the auxiliary hydraulics, increase the engine speed to full RPM, and drive the loader forward into the work area.

NOTE: Raising the front of the mini brush mower a few inches may help while driving forward into thick brush and when turning.

Shutdown Check Valve

The mini brush mower is equipped with a shutdown check valve that allows the blades to coast down slowly to a stop. This prevents damage to the drive components when shutting the oil flow off.

⚠ WARNING Blades will continue to rotate for a brief amount of time after oil flow has been shut off. Wait for all motion to stop before leaving the operator's position. This can take 60 to 70 seconds or more in some cases.



If the mower is run with the oil flow in reverse, the oil will bypass through the check valve and the mower will not operate correctly. Symptoms could include very low speed and a lack of power.

To run the mower in continuous flow mode, the correct lead hose will need to be pressurized so that the check valve does not open. If the mower does not operate correctly with the oil flow engaged, try reversing the flow. If this works, either adjust the controls to allow for reverse flow (feature available on some skid steer models) or swap the couplers on the lead hoses of the mower.

IMPORTANT: Do not operate the mini brush mower if the check valve is malfunctioning or disabled.

See loader's operator's manual for details on identifying the pressurized hydraulic coupler.

ROUTINE MINI BRUSH MOWER MAINTENANCE

⚠ WARNING Lower the attachment to rest on the ground, shut down the engine, relieve the hydraulic pressure to the attachment, wait for all motion to stop, and set park brake before leaving the operator's station to perform service of any kind.

It is the operator's responsibility to make daily inspections of the loader and attachment for damage, loose bolts, fluid leaks, or anything else that could cause a potential service or safety problem. Preventive maintenance is the easiest and least expensive type of maintenance.

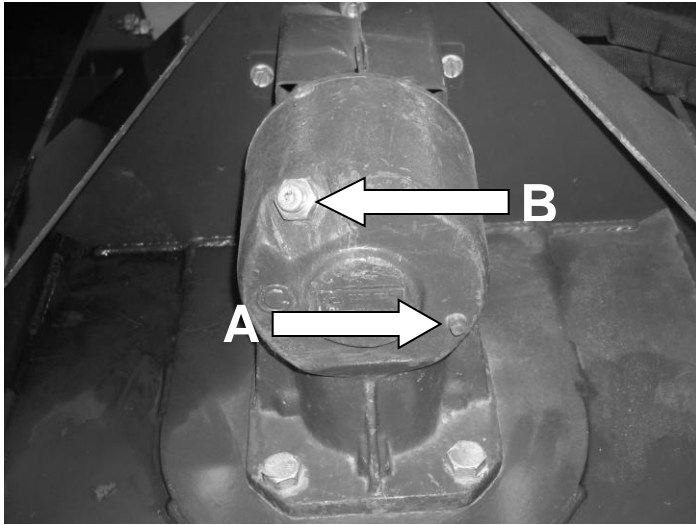
IMPORTANT: Bolts and set screws can loosen after initial usage. After the first hour of operation check all bolts and set screws. This must also be done daily before operation. If nuts or bolts are missing or damaged, replace immediately.

DAILY INSPECTION

Check the following items at least **ONCE A DAY** before operating the mower:

1. Check lift limit chain and shackle for damage.
2. Check blades for cracks or damage. Replace if necessary.
3. Check blade mounting hardware for proper torque of 1000 ft. lbs. (1355 Nm). Tap bolt head with hammer and retorque. Check mounting plate hardware.
4. Check hub retaining bolt. Re-torque to 600 ft. lbs. if removed.
5. Check deck and shields. Repair if damaged or replace if necessary.
6. Check for damaged or missing decals. Replace if necessary.
7. Check for damaged or leaking hydraulic hoses or fittings. Replace if necessary.
8. Clean debris, leaves, grass, and flammable material from deck area and under covers.
9. Check lubrication level in gearbox (EP80W-90 or EP85W-140 gear lube). Approximately 23 oz.

ROUTINE MINI BRUSH MOWER MAINTENANCE



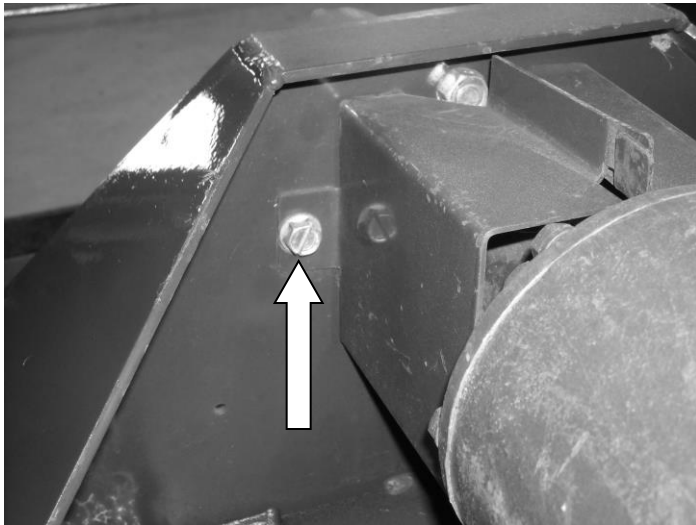
Gearbox Fluid Check and Fill

1. Position the attachment on a flat, level surface.
2. Remove the level check plug **[A]** to check the fluid level in the gearbox. Fluid must be level with the check plug hole.

NOTE: This gearbox holds about 23oz of oil. Do not overfill the gearbox.

3. To add EP80W-90 or EP85W-140 gear lube, remove the fill plug **[B]** and add lube until it is level with the check plug hole.
4. Reinstall the level check plug and the fill plug, and clean up any oil that may have spilled.

IMPORTANT: Fluids such as gear lube and hydraulic fluid must be disposed of in an environmentally safe manner. Some regulations require that certain spills and leaks be cleaned in a specific manner. Check local, state, and federal regulations for the correct disposal.



Inspecting the Motor Coupler

1. Remove the two bolts holding the two halves of the coupler shield and remove the shields.
2. Check the condition and tightness of the nut and bolt. Replace as needed.

⚠ WARNING Moving parts may cause injury or death. Always replace guard after servicing. Do not operate without cover in place.

ROUTINE MINI BRUSH MOWER MAINTENANCE

Cleaning the Brush Mower

⚠ WARNING To avoid injury or death, before exiting under or servicing under the attachment, be sure to disconnect the auxiliary hydraulic hoses. Raise the lift arms and tilt the attachment down fully. Install an approved lift arm support and stop the engine.

1. To clean under the deck, position the attachment by raising the lift arms and tilting the attachment down, as shown. Use an arm lock when working with arms raised. This may require the help of an assistant. Refer to loader's operator's manual for arm locking instructions. Keep the front edge of the attachment within one foot of the ground for debris clean out or blade service.

2. Exit the loader.

⚠ WARNING Always wear eye protection that meets z87.1 when cleaning.

3. Use water or a small brush to clean debris from the areas under the cover and around the gearbox.

⚠ WARNING Use care when removing any debris that is wrapped around the blades, stump jumper, or gearbox shaft. Blades can rotate suddenly.

ROUTINE MINI BRUSH MOWER MAINTENANCE

Blade Removal and Installation

NOTE: Refer to Daily Inspection on page 10 for daily maintenance check. Check that the blades can swing freely. Also check blades, mounting hardware, and stump jumper for wear, cracking, or breakage, which can cause excessive vibrations. Replace if damaged.

Only service the blades when the attachment is attached to the loader.

⚠ WARNING To avoid injury or death, before exiting under or servicing under the attachment, be sure to disconnect the auxiliary hydraulic hoses. Raise the lift arms and tilt the attachment down fully. Install an approved lift arm support and stop the engine.

Removal:

1. Remove the two (2) bolts securing the blade nut access cover, and remove the cover.
2. Rotate the stump jumper until the bolt is aligned with the access hole.
3. Remove the locknut from the blade bolt.

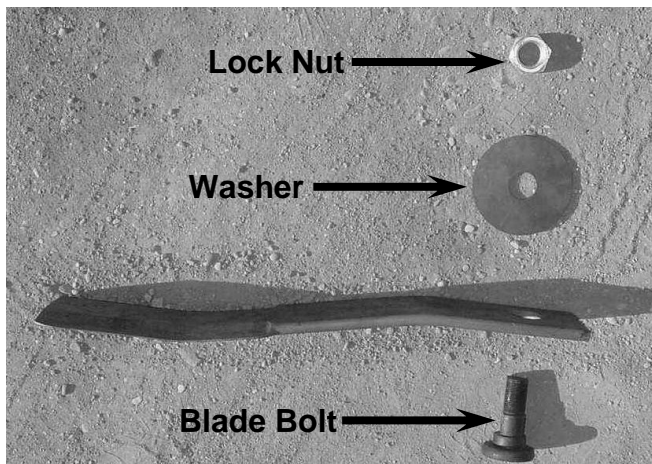
NOTE: Blade bolt and blade may fall from the stump jumper when removing the blade locknut. Always support the blade bolt and blade while removing the locknut.

Installation:

1. Always use a **new** locknut and bolt during assembly.
2. Tighten the locknut to 1000 ft. lbs. (1355 Nm) torque. Tap bolt head with a hammer and retorque. Repeat procedure until the locknut will not turn when torqued. Repeat the procedure for the other blade.

NOTE: The blade bolt fits only one way into the stump jumper. Install the washer between the blade and the stump jumper.

NOTE: If the blade carrier bar is removed for any reason, be sure to torque the slotted nut to 600 ft. lbs when reinstalling and install cotter pin.



ROUTINE MINI BRUSH MOWER MAINTENANCE

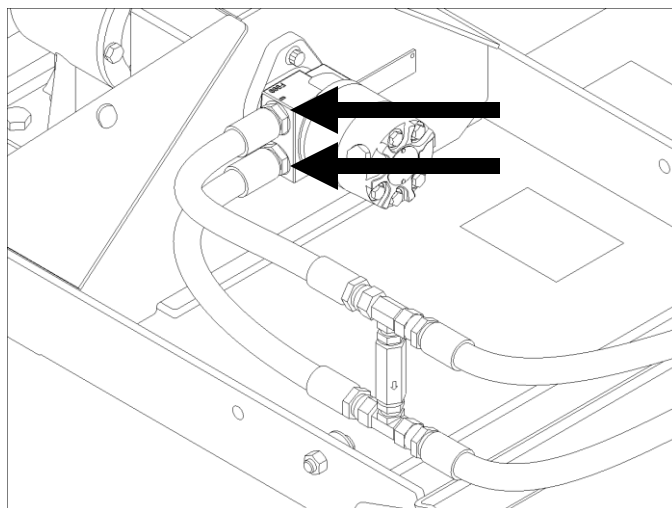
Reversing Blade Rotation

The blades of the mini brush mower are double-sided and can be used in either direction. When the first side becomes dull, you can reverse the direction of rotation by swapping the hose ends where they connect to the motor. This will reverse the motor rotation.

When both edges of the blade are excessively worn, replace both blades.

⚠ WARNING Always replace worn blades. Do not sharpen or weld on the blades. Excessively worn blades can break and be thrown hundreds of feet.

Always replace both blades with two that are equal in weight to prevent vibration. Always use genuine Erskine™ replacement blades.



Torque-Tension Relationships for SAE J429 Grade Bolts

Nominal Thread Size	SAE J429 Grade 2			SAE J429 Grade 5			SAE J429 Grade 8		
	Clamp Load (lbs)	Tightening Torque		Clamp Load (lbs)	Tightening Torque		Clamp Load (lbs)	Tightening Torque	
		K = .15	K = .20		K = .15	K = .20		K = .15	K = .20
Unified Coarse Thread Series									
1/4-20	1,300	49 in-lbs	65 in-lbs	2,000	75 in-lbs	100 in-lbs	2,850	107 in-lbs	143 in-lbs
5/16-18	2,150	101	134	3,350	157	210	4700	220	305
3/8-16	3,200	15 ft-lbs	20 ft-lbs	4,950	23 ft-lbs	31 ft-lbs	6,950	32.5 ft-lbs	44 ft-lbs
7/16-14	4,400	24	30	6,800	37	50	9,600	53	70
1/2-13	5,850	36.5	49	9,050	57	75	12,800	80	107
9/16-12	7,500	53	70	11,600	82	109	16,400	115	154
5/8-11	9,300	73	97	14,500	113	151	20,300	159	211
3/4-10	13,800	129	173	21,300	200	266	30,100	282	376
7/8-9	11,425	125	166	29,435	321	430	41,550	454	606
1-8	15,000	187.5	250	38,600	482.5	640	54,540	680	900
Unified Fine Thread Series									
1/4-28	1,500	55 in-lbs	75 in-lbs	2,300	85 in-lbs	115 in-lbs	3,250	120 in-lbs	163 in-lbs
5/16-24	2,400	112	150	3,700	173	230	5,200	245	325
3/8-24	3,600	17 ft-lbs	22.5 ft-lbs	5,600	26 ft-lbs	35 ft-lbs	7,900	37 ft-lbs	50 ft-lbs
7/16-20	4,900	27	36	7,550	42	55	10,700	59	78
1/2-20	6,600	41	55	10,200	64	85	14,400	90	120
9/16-18	8,400	59	79	13,000	92	122	18,300	129	172
5/8-18	10,600	83	110	16,300	128	170	23,000	180	240
3/4-16	15,400	144	193	23,800	223	298	33,600	315	420
7/8-14	12,610	138	184	32,480	355	473	45,855	500	668
1-12	16,410	205	273	42,270	528	704	59,670	745	995

Clamp load estimated as 75% of proof load for specified bolts.

Torque values for 1/4 and 5/16 inch series are in inch-pounds. All other torque values are in foot-pounds.

Torque values calculated from formula $T = KDF$

where: $K=0.15$ for "lubricated" conditions

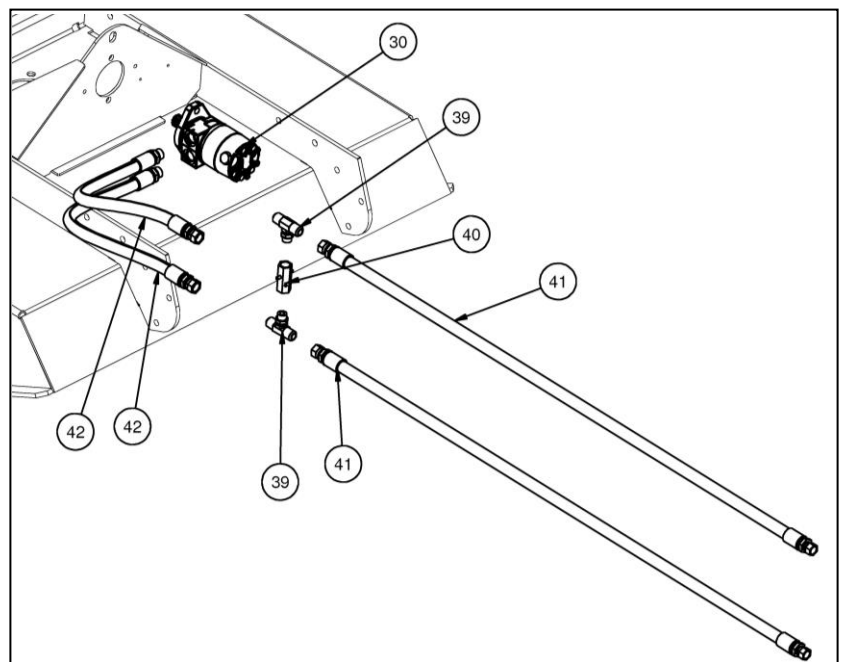
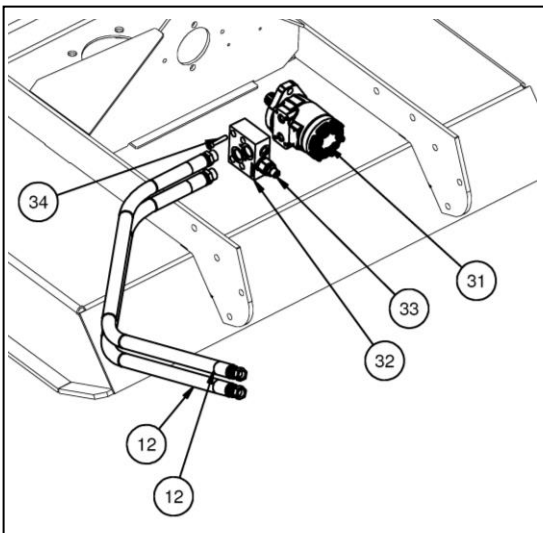
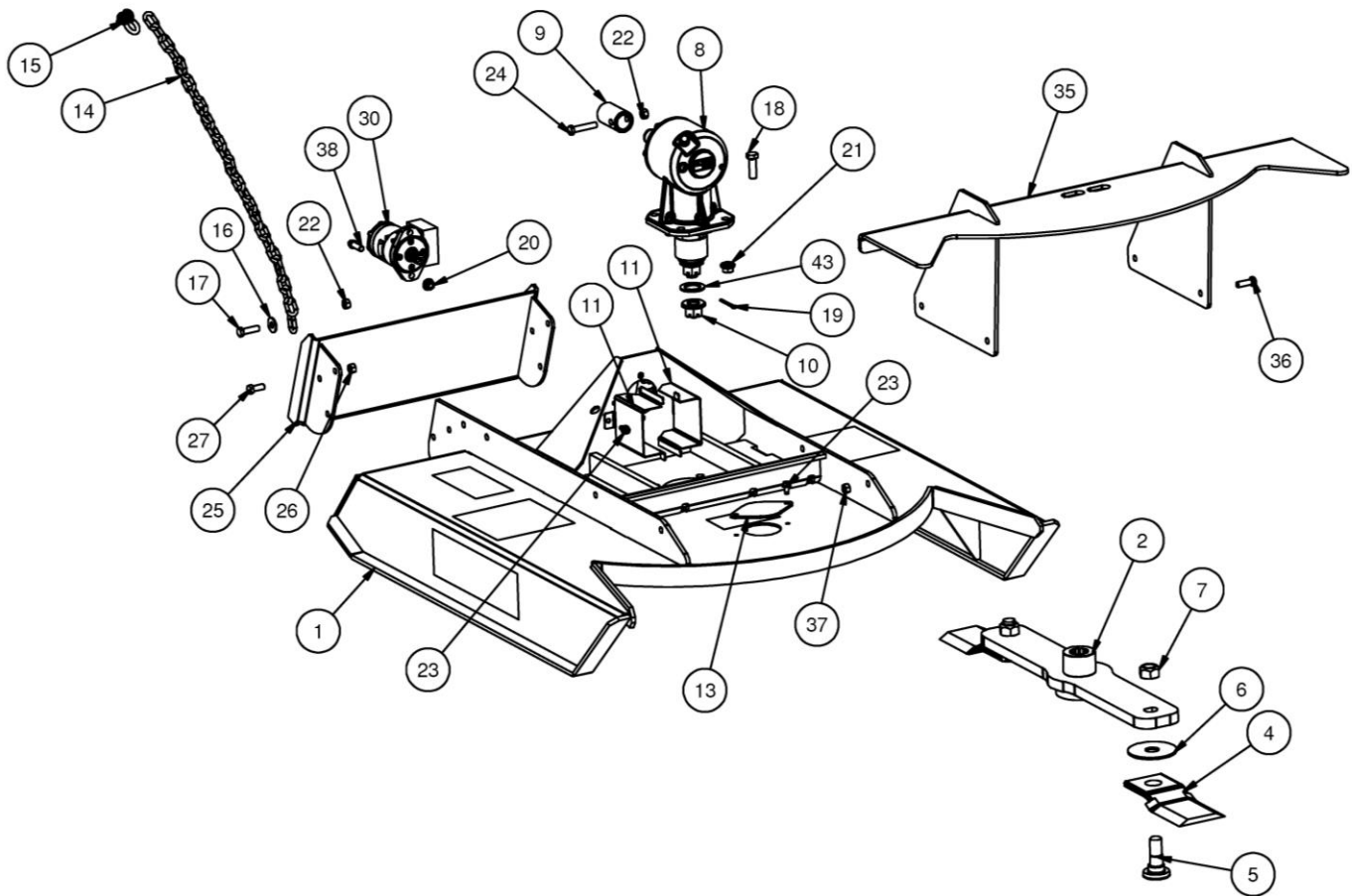
$K=0.20$ for "dry" conditions

This image shows a full page of blank, lined paper. It features approximately 28 horizontal black lines spaced evenly across the page, typical of notebook paper. The lines are thin and extend from the left edge to the right edge. There is no handwriting or other markings on the page.

MINI BRUSH MOWER PARTS INFORMATION

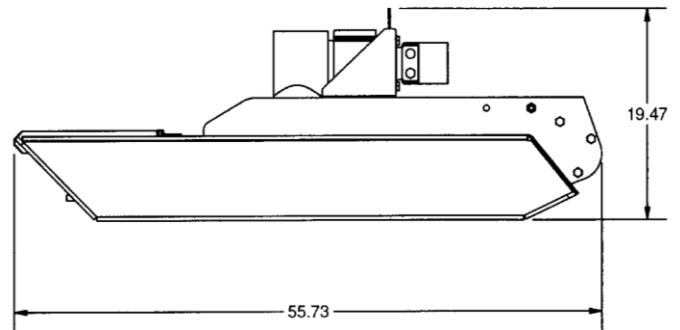
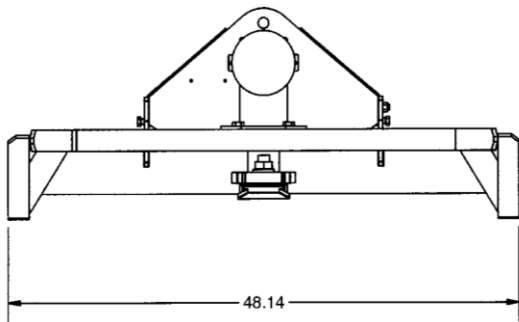
ITEM	QTY	PART NO.	DESCRIPTION	STOCK NUMBER
1	1	400407	MOWER DECK 44 W/A	
2	1	400405	STUMP JUMPER 44 W/A	
3		400492	KIT PARTS BLADE	
4	2	400439	BLADE MOWER 44	
5	2	314064	BOLT MOWER BLADE	
6	2	314061	WASHER HARD 1.25 ID X 4.438 OD	
7	2	314065	NUT TOP LOCK 1-1/8 NF GRC	
8	1	400413	GEAR BOX RC30	(Add 23oz of 80W-90)
		300695	SEAL OUTPUT RC30	PARTS ONLY
9	1	400461	COUPLER DRIVE	
10	1	120050	CASTLE NUT 1-14UNS-2B FLG	
11	2	314111	SHIELD COUPLER PAINTED	
12	2	313781	HOSE 1/2 X 65 10MB-8FJX	(USED WITH MOTOR 400467)
13	1	314113	COVER BOLT ACCESS PAINTED	
14	1	400462	CHAIN LINK 5/16 X 5 FT	
15	1	400463	SHACKLE CLEVIS PIN 3/8	
16	1	33012	WASHER FLAT	1/2 - USS - GR 5
17	1	13210	BOLT HEX	1/2 X 1.75 - UNC - GR 5
18	4	15311	BOLT HEX	5/8 X 2 - UNC - GR 8
19	1	65127	PIN COTTER 3/16 X 2	
20	2	0167011	NUT TOP LOCK FLNG	1/2 - UNC - GR 8
21	4	0167012	NUT TOP LOCK FLNG	5/8 - UNC - GR 8
22	2	37214	NUT REV LOCK	1/2 - UNC - GR 5
23	4	32467	BOLT FLG THRD RLNG	3/8 X 3/4 - UNC - GR 5
24	1	13213	BOLT HEX	1/2 X 2-1/2 - UNC - GR 5
25	1	400000	MOUNT FRAME TORO MINI W/A	OPTIONAL MOUNT PACKAGE
	1	400001	MOUNT FRAME ASV MINI W/A	OPTIONAL MOUNT PACKAGE
	1	400002	MOUNT FRAME BC MINI W/A	OPTIONAL MOUNT PACKAGE
	1	300283	MOUNT FRAME UNIV MINI W/A	OPTIONAL MOUNT PACKAGE
	1	330622	MOUNT FRAME AVANT MINI W/A	AVANT MNT MINI PKG 330753
26	6	0167011	NUT FLG TOP LOCK 1/2 NC GR 8 YZ	OPTIONAL MOUNT PACKAGE
27	6	15209	BOLT HEX - 1/2 X 1-1/2 - UNC - GR 8	OPTIONAL MOUNT PACKAGE
29	1	400410	SEAL KIT MOTOR	PARTS ONLY (400411)
30	1	400411	MOTOR ASSM	REPLACED BY 400467
	1	400467	MOTOR ASSM W/ VALVE BLK	REPLACED 400411
31	1	400468	MOTOR ONLY	PARTS ONLY (400467)
32	1	400469	VALVE BLOCK	PARTS ONLY (400467)
33	1	400470	VALVE RELIEF ADJ 3000	PARTS ONLY (400467)
34	4	23259	BOLT SHCS 5/16 X 1-1/2 NC BO	PARTS ONLY (400467)
35	1	400408	PUSH BAR MINI W/A	OPT PUSH BAR PKG
36	4	13209	BOLT 1/2 X 1-1/2 NC GR 5	OPT PUSH BAR PKG
37	4	37214	NUT REV LOCK 1/2 NC GR 5	OPT PUSH BAR PKG
38	2	22876	BOLT FLNG 12PT	1/2 X 1-1/2 NC
39	1	200061	ADPT TEE 10MJ-10MJ-8MB	USE WITH MOTOR 400411
40	1	200062	VALVE CHECK SAE 8 FM/FM	USE WITH MOTOR 400411
41	2	400473	HOSE 5/8 X 50 10FJX-8FJX	USE WITH MOTOR 400411
42	2	400472	HOSE 5/8 X 15 10MB-10FJX	USE WITH MOTOR 400411
43	1	201325	WASHER MB 1 1/2 10 GA NARROW	

MINI BRUSH MOWER PARTS INFORMATION



MINI BRUSH MOWER GENERAL SPECIFICATIONS

Model	Mini Brush Mower
Mounting Plate	Customer Specific
Hydraulic Pump Capacity Requirements	7-15 GPM
Operating Weight	420 pounds
Cutting Diameter	43.75"
Cutter Capacity	Brush Material up to 2" diameter
Overall Height	19.75"
Overall Length	62"
Overall Width	48.25"



All dimensions are in INCHES.



LIMITED WARRANTY

Erskine Attachments, LLC warrants each new machine manufactured by us to be free from defects in material and workmanship for a period of twelve (12) months from date of delivery to the original purchaser.

Our obligation under this warranty is to replace free of charge, at our factory or authorized dealership, any part proven defective within the stated warranty time limit.

All parts must be returned freight prepaid and adequately packaged to prevent damage in transit.

This warranty does not cover:

1. New products which have been operated in excess of rated capacities or negligence
2. Misuse, abuse, accidents or damage due to improperly routed hoses
3. Machines which have been altered, modified or repaired in any manner not authorized by our company
4. Previously owned equipment
5. Any ground engaging tools in which natural wear is involved, i.e. tooth tips, cutting teeth, etc
6. Normal maintenance
7. Fork tines
8. Hydraulic motors that have been disassembled in any manner

In no event will the Sales Representative, Dealership, Erskine Attachments, LLC, or any other company affiliated with it or them be liable for incidental or consequential damages or injuries, including but not limited to the loss of profit, rental or substitute equipment or other commercial loss. Purchaser's sole and exclusive remedy being as provided here in above.

Erskine Attachments, LLC must receive immediate notification of defect and no allowance will be made for repairs without our consent or approval.

This warranty is in lieu of all other warranties, express or implied by law or otherwise, and there is no warranty of merchantability or fitness purpose.

No agent, employee, or representative of Erskine Attachments, LLC has any authority to bind Erskine Attachments, LLC to any warranty except as specifically set forth herein. Any of these limitations excluded by local law shall be deemed deleted from this warranty; all other terms apply.

This warranty may not be enlarged or modified in any manner except in writing signed by an executive officer of Erskine Attachments, LLC to improve its products whenever it is possible and practical to do so. Erskine Attachments, LLC reserves the right to make changes and or add improvements at any time without incurring any obligation to make such changes or add such improvements to products previously sold.

Erskine Attachments, LLC
P.O. Box 1083 Alexandria, MN 56308
Phone (218) 435-4045



