

# **USER'S INSTRUCTIONS FOR MOUNTING THE MINI BRUSH MOWER**

After the initial set-up assembly is completed use the following procedure to mount the attachment to the loader.

**⚠ WARNING** Coupler wedges or pins must extend through the holes in the attachment mounting plate. Levers must be fully down and locked. Failure to secure wedges or pins can allow attachment to come off and cause injury or death.

## **Instructions for mounting to a ride-on mini skid loader:**

1. Use the step, safety treads, and grab handles to get on and off the loader.
2. Sitting in the operator's seat, lower seat bar, fasten the seat belt and with the controls in a neutral position, start the engine.
3. Drive the loader to the rear of the attachment. Put the loader quick attach coupler into the attachment mounting bracket.
4. Tilt the loader coupler backward a small amount until it is fully engaged in the attachment mounting bracket.
5. Stop the engine and engage the park brake.
6. Exit the loader and secure the coupler locking mechanism that locks the attachment to the loader.
7. Route the lift limit chain over the boom cross-member and down through a hole in the front frame. Then latch the end of the chain back to itself allowing for some slack.

## **Instructions for mounting to a walk-behind mini skid loader:**

1. Standing at the operator's station with the controls in a neutral position, start the engine.
2. Drive the loader to the rear of the attachment. Put the loader quick attach coupler into the attachment mounting bracket.
3. Tilt the loader coupler backward a small amount until it is fully engaged in the attachment mounting bracket.
4. Stop the engine and engage the park brake.
5. Walk to the front of the loader and secure the coupler locking mechanism that locks the attachment to the loader.
6. Route the lift limit chain over the boom cross-member and down through a hole in the front frame. Then latch the end of the chain back to itself allowing for some slack.

# USER'S INSTRUCTIONS FOR MOUNTING THE MINI BRUSH MOWER

**⚠ WARNING** Never operate without lift limit chain installed. Never modify the lift limit chain. To reduce the risk of injury or death check that is operating properly when you first use a machine, after service, or anytime someone may have disconnected the lift limit chain.

## Attaching Hydraulics:

1. Connect the hydraulic quick couplers from the Mini Brush Mower to the loader.

Be sure to thread the hoses through the hose holder on the loader. Bungee straps can be used as an alternate method of securing the hoses.

**IMPORTANT:** Make sure the quick couplers are fully engaged. If the quick couplers do not fully engage, check to see that the couplers are the same size and brand. Do not force the quick couplers together.

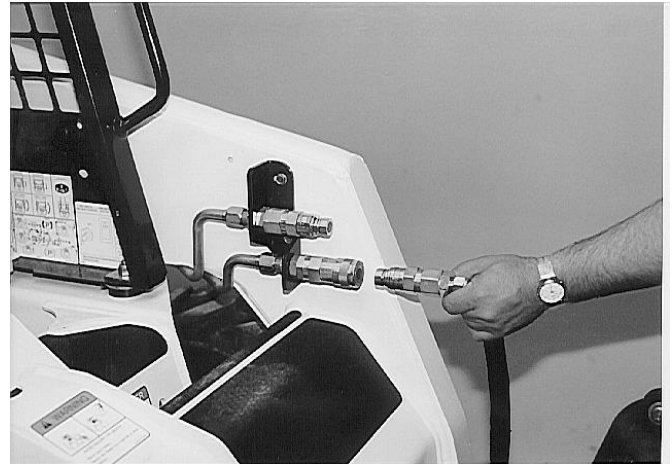
**IMPORTANT:** Wipe the ends of the hydraulic quick couplers (both lead and loader) with a rag to remove any possible contamination. Contamination can cause hydraulic components to fail and is not covered under warranty.

2. Make sure the hoses are properly routed to fit your specific loader. If the hoses are not routed correctly, hoses may get pinched or rub on tires. Be sure to check the hose routing through the full range of intended motion of the attachment before operating it.

More than one routing may be acceptable depending on the loader. Pick the routing that best suits your loader.

**IMPORTANT:** Proper hose routing is the responsibility of the owner and/or operator. Pinched or stretched hoses are not covered under warranty.

Mounting is now complete and you are ready to use the attachment. Use reverse order of above instructions to dismount the attachment from the loader.



**NOTE:** Attachment is shipped with 12FJX (1-1/16" Female JIC Swivel) fittings on the ends of the lead hoses.

# OPERATING THE MINI BRUSH MOWER

The type of brush being cut and the ground conditions will determine the best ground speed and cutting procedure. The mini brush mower is designed to cut short or tall grass and brush.

**IMPORTANT:** Before operating the attachment, perform the service schedule for routine maintenance.

1. Inspect the cutting area for obstructions such as stumps, wire, rocks, electrical lines, debris, drop offs, holes, etc. Remove obstructions from the cutting area that might be picked up and thrown.
2. With the operator in the seat of the loader, the seat belt fastened and the seat bar lowered, start the engine.

**⚠ WARNING** To improve stability, always carry attachment low to the ground while driving.

**IMPORTANT:** Do not operate attachment when excessive vibration is present. Serious damage can occur. Check blades and gearbox.

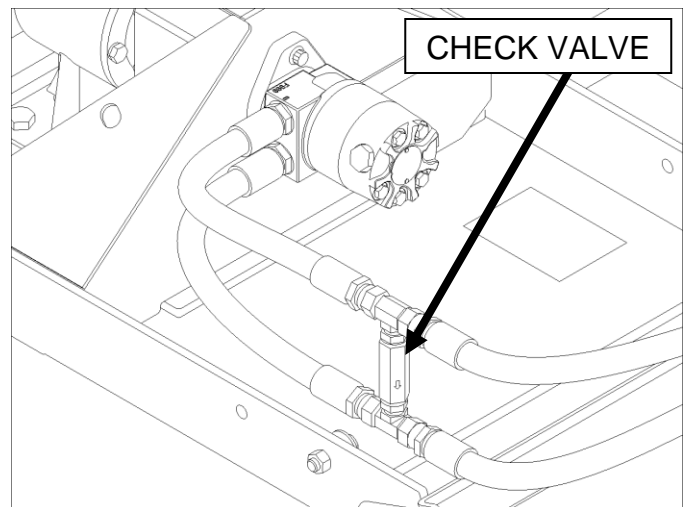
3. With the engine at low RPM, lower the loader lift arms fully and position the mini brush mower flat on the ground.
4. Engage the auxiliary hydraulics, increase the engine speed to full RPM, and drive the loader forward into the work area.

**NOTE:** Raising the front of the mini brush mower a few inches may help while driving forward into thick brush and when turning.

## Shutdown Check Valve

The mini brush mower is equipped with a shutdown check valve that allows the blades to coast down slowly to a stop. This prevents damage to the drive components when shutting the oil flow off.

**⚠ WARNING** Blades will continue to rotate for a brief amount of time after oil flow has been shut off. Wait for all motion to stop before leaving the operator's position. This can take 60 to 70 seconds or more in some cases.



If the mower is run with the oil flow in reverse, the oil will bypass through the check valve and the mower will not operate correctly. Symptoms could include very low speed and a lack of power.

To run the mower in continuous flow mode, the correct lead hose will need to be pressurized so that the check valve does not open. If the mower does not operate correctly with the oil flow engaged, try reversing the flow. If this works, either adjust the controls to allow for reverse flow (feature available on some skid steer models) or swap the couplers on the lead hoses of the mower.

**IMPORTANT:** Do not operate the mini brush mower if the check valve is malfunctioning or disabled.

See loader's operator's manual for details on identifying the pressurized hydraulic coupler.